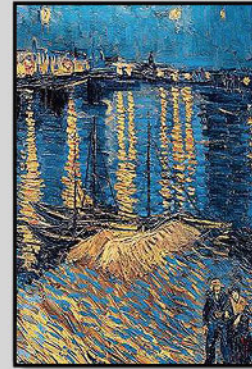
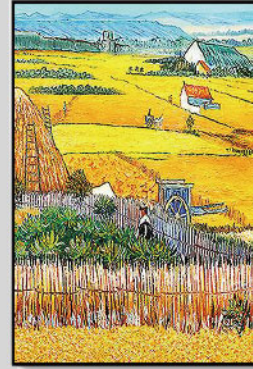


UV / 平板打印机
Flatbed Printer

RB-4030pro RB-4060plus

Color the world



- 1/2 pcs of printheads 单双喷头可选
- Auto height detection 自动测高
- 40*30cm/40*60cm print size A3/A2打印尺寸
- Color-White in one pass 白彩同打
- Lc&Lm improves color transition 颜色过渡更加自然



UV / 平板打印机 Flatbed Printer

RB-4030pro/RB-4060plus

• Features 特点



Solid Guideways

7pcs of Hiwin linear guideways on X, Y and Z axis brings longer lifespan and more accurate positioning.

Z轴使用双方形导轨加丝杆导轨，承重性牢固性更好。



Inspection Windows

4 openable windows, more convenient for machine maintenance and inspection.

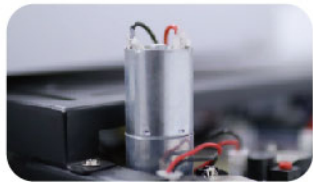
4个可开工作窗，机器维护检测更加方便。



Strong Cooling System

Powerful cooling fans for main board+water circulation system for UV LED lamps ensure stable and operation time.

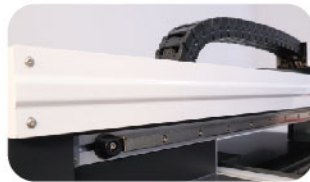
强力风冷+分体水冷，确保机器长期稳定运行。



White Ink stirring

The white ink circulation system avoids the precipitation. In addition, it is equipped with an ink shortage alarm system.

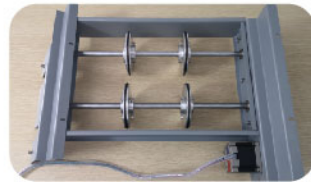
白墨搅拌系统避免白墨沉淀，另外配有缺墨报警器。



Grating Protector

The double metal sheets protects the grating from dust and ink spray, avoiding inaccurate positioning and grating sensor.

双层金属片保护光栅，防尘防飞墨，确保打印精度。



Aluminum Rotary Device

Motor-driven cylinder tooling with all-aluminum configuration.

电机驱动全铝配置的圆柱体工装。

• Specification 参数表

Name 型号		RB-4030Pro	RB-4060Plus
Printhead 喷头		Single/Dual Epson DX8	Dual Epson DX8/4720
Resolution 精度		720*720dpi~720*2880dpi	
Ink 墨水	Type 类型	UV curable hard/soft ink 硬墨、软墨可选	
	ink bottle size 墨瓶容量	500ml per bottle	
	Ink supply system 供墨系统	CISS Built Inside With Ink Bottle 连续供墨系统	
	Consumption 墨水消耗	9-15ml/sqm	
	Ink stirring system 墨水搅拌系统	Available 已配置	
Maximum printable area(W*D*H) 打印区域	Horizontal 打印尺寸	40*60cm(16*24inches; A2)	40*30cm(16*12inches; A3)
	Vertical 打印高度	substrate 15cm(6inches) /Rotary 8cm(3inches) 平板模式15cm; 圆柱体模式8cm	
Media 介质	Type 类型	plastic, pvc, acrylic, glass, ceramic, metal, wood, leather, etc. 手机壳, 金属, 木制品, 玻璃, 陶瓷, 亚克力, 膜, 各类塑料制品等	
	Weight 承重	≤15kg	
	Media (object) holding method 承重方式	Glass Table(standard)/Vacuum table(optional) 玻璃平台、金属真空吸附平台可选	
Software 软件	RIP	Maintop6.1 蒙泰	
	Control 控制软件	Wellprint 威立印	
	Format 格式	.tif/.jpg/.bmp/.gif/.tga/.psd/.psb/.ps/.eps/.pdf/.dcs/.ai/.eps/.svg	
	System 系统	Windows XP/Win7/Win8/win10	
	Interface 接口	USB 3.0	
	Language 语言	English/Chinese 中英文可选	
Power 功率	Requirement	50/60HZ 220V(±10%) < 5A	
	Consumption	500W	800W
Dimension	machine size 机器尺寸	63*101*56cm	97*101*56cm
	Package size 包装尺寸	120*80*88cm	118*116*76cm
Net Weight/ Gross Weight 净重/毛重		net 55kg/ Gross 84kg	net 90kg/ Gross 135kg