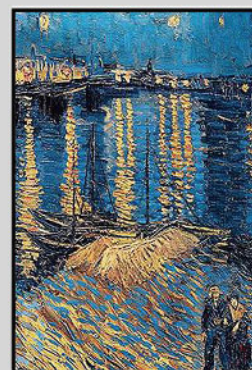


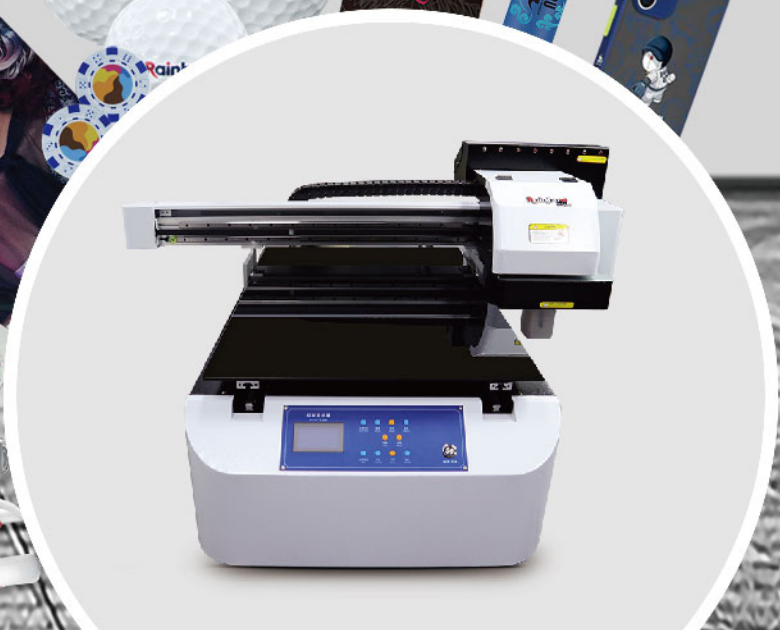
UV / 平板打印机
Flatbed Printer

Nano 9

Color the world



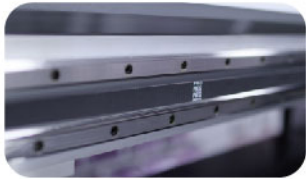
- 2/3/4 print heads 2/3/4 喷头
- 60*90cm(23.6"*35.4") print size A1 打印尺寸
- Color-white-varnish in one pass 白彩光油同打
- Lc&Lm improves color transition 颜色过渡更加自然



UV / 平板打印机 Flatbed Printer

Nano 9

• Features 特点



Dual Guideways

Dual Hi-Win Linear guideways in X-axis, longer lifespan and more accurate positioning.

X轴双上银导轨, 定位更精准, 寿命更长。



High Precision Rack

Equipped with high precision rack+2pcs of linear guideways on Z-axis, upgraded configuration with better durability.

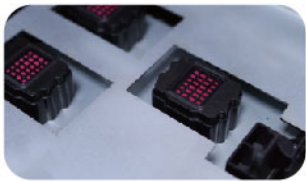
Z轴高精度齿条搭配双线性导轨, 确保机器长期稳定运行。



Control Panel

Smart LED screen with necessary control buttons for easier operation.

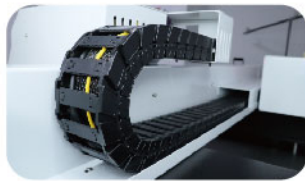
多功能控制面板让三轴操控更加便利。



Slider Lock

Auto printhead lock sliding lever, automatic cleaning, moisturizing, which prolongs the printhead lifespan significantly.

精准滑靠式墨栈, 自动清洗、保湿三大功能, 显著延长喷头寿命。



Iigus Cable Carrier

High quality mute Germany Iigus cable carrier protects the ink tube and data cable.

德国进口易格斯静音拖链。



Rotary Support

Full-aluminum rotary device for mugs and bottles brings high printing resolution.

全铝圆柱体装置, 保证高精度打印。

• Specification 参数

Name 名称		Nano 9
Printhead 喷头		2-4pcs Epson DX8 三或四个爱普生DX8喷头
Resolution 打印精度		720dpi-2880dpi (6-16passes)
Ink 墨水	Type 类型	UV LED Curable Ink UV固化墨水
	Package size 包装尺寸	500ml per bottle 500ml/每瓶
	Ink supply system 供墨系统	CISS Built Inside Within Ink bottles CISS 连续供墨系统
	Consumption 消耗	9-15ml/sqm
Maximum printable area (W*D*H) 最大打印尺寸 (长、宽、高)	Ink stirring system 搅拌系统	Available 可使用
	Horizontal 水平	60*90cm(24*37.5inch;A1)
Media	Vertical 垂直	substrate 16cm(6inches) /rotary 12cm(5inches)
	Type 类型	Metal, Plastic, Glass, Wood, Acrylic, Ceramics, PVC, Paper, TPU, Leather, Canvas, etc. (金属、塑料、玻璃、木材、亚克力、陶瓷、PVC、纸、TPU、皮革、帆布等)
	Weight 重量	≤20kg
Software 软件	Media (object) holding method	Vacuum table(optional)
	RIP	Ultraprint 锐彩
	Control 控制	Print Dream
	Format 格式	TIFF(RGB&CMYK)/BMP/PDF/EPS/JPEG...
	System 系统	Windows XP/Win7/Win8/Win10
	Interface 接口	USB 3.0
Power 功耗	Language 语言	Chinese/English中文和英文
	Requirement 要求	50/60HZ 220V(±10%) < 5A
Dimension 尺寸	Consumption 消耗	600W
	Assembled 机身尺寸	113*140*72cm
	Operational 包装尺寸	153*145*85cm
Weight 重量		135kg/213kg